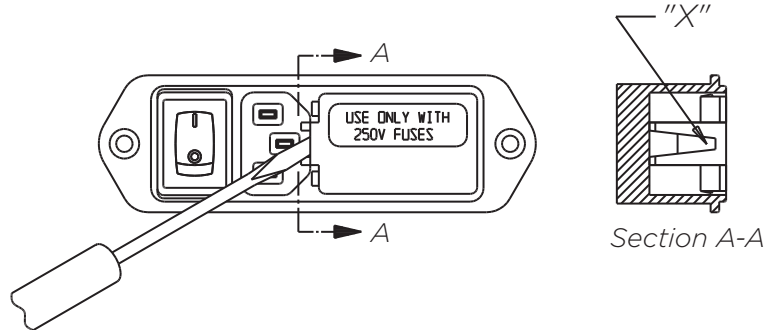


CORCOM M Series

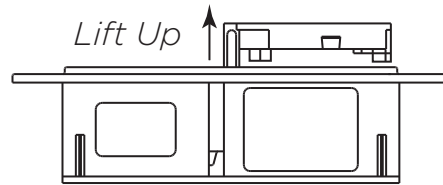
Technical Note: *Removal of the fuse holder*

Step One:

Insert a pocket screwdriver at point "X" as shown.

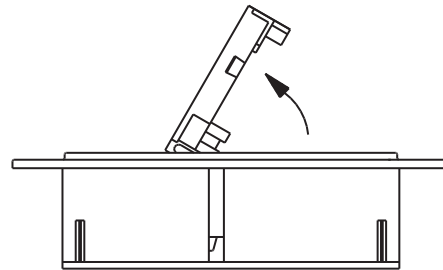


Gently lift up until the entire door lifts approximately 1/4" (*minimum*)



Step Two:

Once lifted, the door will pivot on the hinges and expose the fuse holder



Step Three:

When fuse holder is installed in the single fuse position, apply the screwdriver as shown and gently pry up.

When the fuse holder is installed in the dual fuse position, it will normally release as soon as the door is opened.

